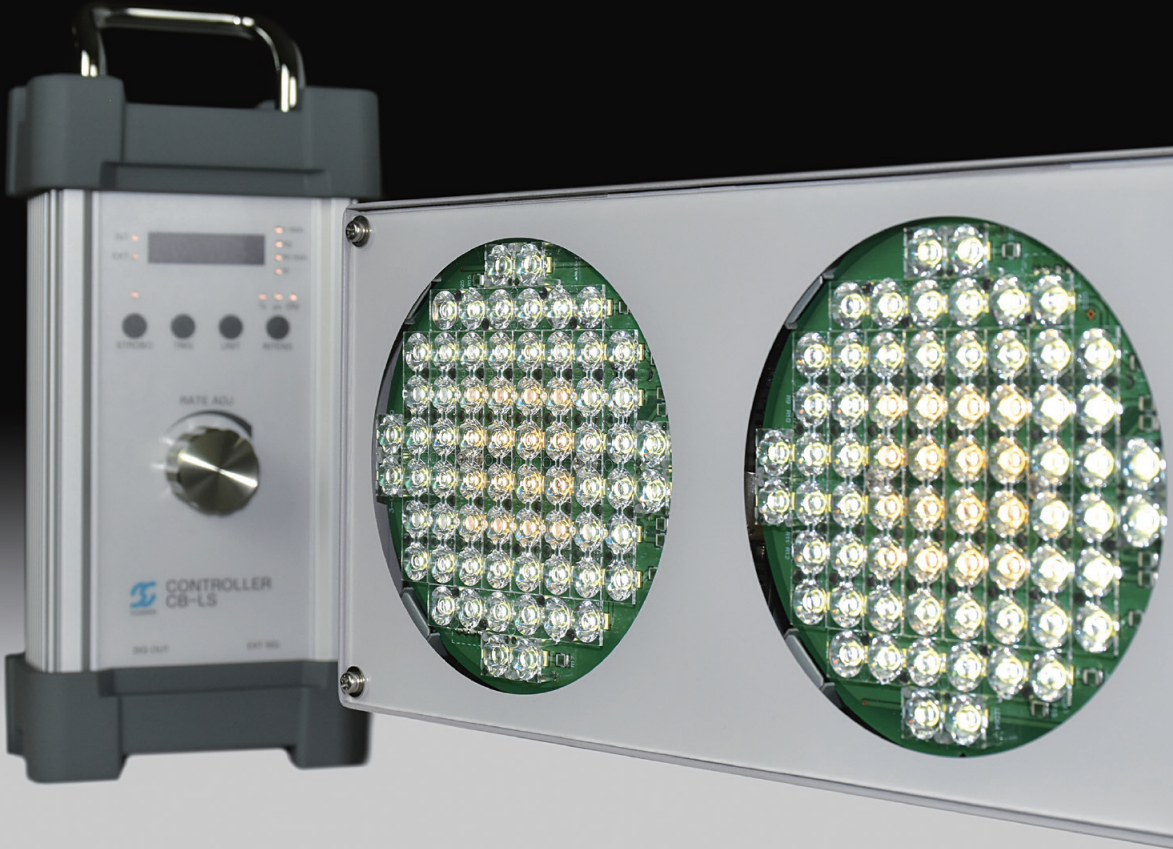


LED STROBE SYSTEM
for surface inspection



LED STROBE LS-500

**Check the motion
without stopping it.**

**Eye-friendly brightness and uniform
illumination!**

Ultra-bright LEDs! 4200 LUX (@ 1000 mm)

**Illumination area can easily be expanded
by combining multiple LS-500 units.**



Ideal for surface inspection of the products in steel production,
paper-making and printing plants
Stroboscopes are being applied in various fields.

LED STROBE SYSTEM LS-500 for surface inspection

High-intensity, long-life LEDs and low power consumption makes for maintenance-free operation

☀ Visibility in inspection can be adjusted.

The frequency and duration of flashes can be freely set using the CB-LS Controller.

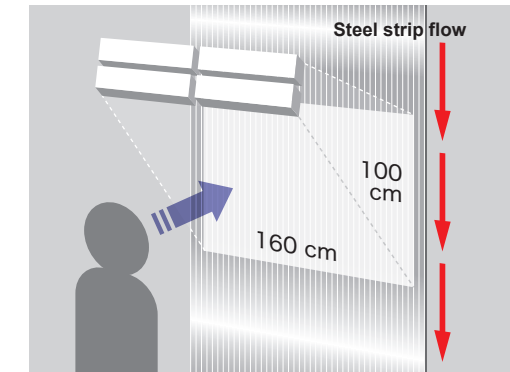
Flash frequency can be set from 30 FPM to 60,000 FPM, and flash duration from 10 μ sec to the time equal to 1% of the flash cycle (max 200 μ sec).

☀ Natural air-cooling makes it unnecessary to supply air.

☀ Saving time and costs of lamp replacement

☀ Expansion of illumination area

Easily expanded to match your line width by combining multiple units horizontally and/or vertically. Up to twelve LS-500 units can be connected to a single CB-LS Controller.



Installation for steel trip inspection
(illumination range: 1.6 m × 1 m)

Specifications

Flash range	Internal trigger: 30–60,000 FPM External trigger: 0–60,000 FPM Resolution: 1 FPM
Flash duration	From 10 μ sec to the time equal to 1% of a flash cycle (max 200 μ sec)
External trigger input signals	Voltage signal: 3–5 Vp, pulse width 10 μ sec or more Current signal: ON level 10–20 mA, pulse width 10 μ sec or more Contact signal: ON time 10 μ sec or more (trigger at ON edge)
Synchronized flash to line speed	Analog current signal of line speed 4–20 mA corresponding to line speed 0–500 m/min Flash interval: 0.02–1 m
Dimensions	LS-500: 499 mm (W) × 124 mm (H) × 120 mm (D) CB-LS: 114 mm (W) × 220 mm (H) × 65 mm (D)
Weight	LS-500: 4.5 kg CB-LS: 1.2 kg
Power supply	100–240 VAC, 50/60 Hz

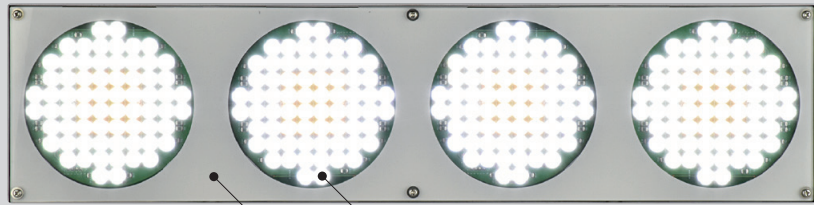
⚠ Read the instruction manual before using the device to ensure safety and to avoid damage to the device.

SUGAWARA Laboratories Inc.



<input type="checkbox"/> Head office	8-2 Minami-Kurokawa, Asao-ku, Kawasaki-shi, Kanagawa, 215-0034, Japan
<input type="checkbox"/> Tokyo sales office	Tel: +81-44-989-7320 Fax: +81-44-989-7338
<input type="checkbox"/> Osaka sales office	6-17 Yokomakura-Nishi, Higashiosaka-shi, Osaka, 578-0956, Japan Tel: +81-72-966-1061 Fax: +81-72-966-0961
<input type="checkbox"/> Nagoya sales office	1-2-29 Kamimaezu, Naka-ku, Nagoya-shi, Aichi, 460-0013, Japan Tel: +81-52-331-6562 Fax: +81-52-331-6604

URL: <https://www.sugawara-labs.co.jp/> E-mail: info@sugawara-labs.co.jp



Equipped with high-intensity, long-life, ultra-bright white LEDs

Fan-less semi-sealed structure to prevent entry of dust particles



Shock-resistant silicon protector

Large aluminum knob makes for easy operation even when wearing gloves.

☀ Brightly illuminates section to be inspected

LS-500 illuminates a range of 80 × 40 cm brightly from a distance of 1 m.

Highly visible uniform emission of light enables easy detection of scratches and defects of the object under inspection.

